

PART #	DESCRIPTION
25150	2018-UP JEEP JL IMPACT SERIES FRONT BUMPER

COMPONENTS INCLUDED	
(1) 18-UP JL FRONT IMPACT BUMPER W/ SHORT WINGS	(1) 18-UP JL FRONT SKID PLATE
HARDWARE INCLUDED	
(4) 12MM NUT/BOLT PLATE (4) 12MM X 35MM HEX HEAD BOLT (8) 12MM X 37MM FLAT WASHER (4) 12MM NYLOCK NUT (4) 12MM PLASTIC RETAINER	(4) 8MM X 30MM HEX BOLT (4) 8MM X 18MM FLAT HEX NUT (4) 8MM HEX NUT (4) 8MM X 35MM HEX BOLT (8) 8MM LOCK WASHER (12) 8MM X 24MM FLAT WASHER
TOOLS REQUIRED	
TORQUE WRENCH 13MM SOCKET / WRENCH 16MM SOCKET / WRENCH	17MM SOCKET / WRENCH 18MM SOCKET / WRENCH 19MM SOCKET / WRENCH
TECH NOTES	
<p>1. INSTALLATION INSTRUCTIONS BASED OFF OF A STOCK, 2018 JEEP JL RUBICON. ADDITIONAL STEPS MAY BE NECESSARY FOR MODIFIED VEHICLES.</p> <p>2. ICON MID-WIDTH (PN: 25152) AND FULL-WIDTH (PN: 25153) BUMPER WINGS ARE AVAILABLE AS OPTIONS.</p>	



WARNING!
<p>** READ ALL INSTRUCTIONS THOROUGHLY FROM START TO FINISH BEFORE BEGINNING INSTALLATION! IF THESE INSTRUCTIONS ARE NOT PROPERLY FOLLOWED SEVERE FRAME, SUSPENSION AND TIRE DAMAGE MAY RESULT TO THE VEHICLE!</p> <p>** ICON VEHICLE DYNAMICS RECOMMENDS THAT YOU EXERCISE EXTREME CAUTION WHEN WORKING UNDER A VEHICLE THAT IS SUPPORTED WITH JACK STANDS.</p> <p>** ICON VEHICLE DYNAMICS RECOMMENDS ALL INSTALLATION TO BE PERFORMED BY A PROFESSIONAL SHOP/SERVICE TECHNICIAN. PRODUCT FAILURE CAUSED BY IMPROPER INSTALLATION WILL NOT BE COVERED UNDER ICON'S WARRANTY POLICY.</p>

INSTALLATION

1. Ensure the vehicle is placed on a level surface with the transmission in PARK, the tires chocked, and the emergency brake ON. Open the hood and disconnect the negative terminal on the battery using a 10mm wrench.
2. Remove the stock skid plate using a 13mm and 16mm. [FIGURE 1 & 2]

FIG.1



FIG.2



3. Disconnect fog lights and any accessories from front bumper such as winch or other lights.

4. Remove the (8) nuts holding the bumper to the frame flange using an 18mm. [FIGURE 3]

FIG.3

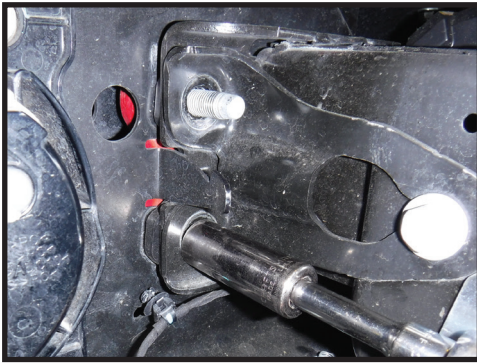


FIG.4



5. Carefully slide the bumper off of the frame rails and set it on the ground. [FIGURE 4]

6. Remove the lower skid plate brackets from the bottom of the frame using a 16mm.

7. Slide the (4) nut/bolt plates into the upper mounting holes and slide plastic clips in place to retain the stud as shown. [FIGURE 5]

FIG.5

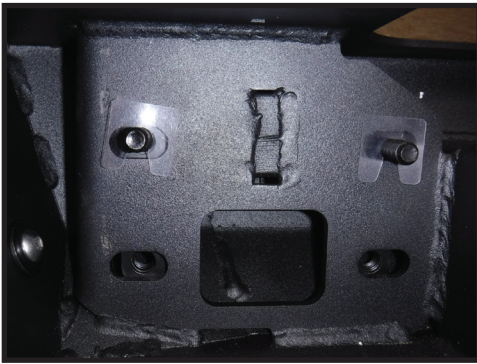


FIG.6



8. Slide the bumper onto the frame rail and start the supplied nylock nuts on the threads. [FIGURE 6]

9. Start the supplied 12mm X 35mm hex head bolts in the nut plates in the lower mounting holes. Once all (4) nuts and all (4) bolts are started, torque to 69 ft-lbs using an 18mm.

10. Install winch if applicable. Refer to the winch mounting instructions. [FIGURE 7 & 8]

FIG.7



FIG.8



11. Mount the skid plate to the bottom of the bumper using the supplied 8mm bolts. Mount the skid plate to the frame using factory hardware. Tighten bumper/skid plate bolts. Torque frame/skid plate bolts to factory spec using a 16mm. [FIGURE 9 & 10]

NOTE: Some models may require the supplied 8mm hardware in place of these bolts.

FIG.9



FIG.10



12. Mount the desired bumper wings (if using mid-width or full-width wings) using the supplied 10mm nuts. Adjust as needed using the slotted holes. Once the wings are adjusted, tighten hardware using a 16mm. [FIGURE 11]

FIG.11



13. Install fog lights if applicable.

14. Connect battery using a 10mm.

VERIFY ALL FASTENERS ARE PROPERLY TORQUED BEFORE DRIVING VEHICLE.

RETORQUE ALL NUTS, BOLTS AND LUGS AFTER 100 MILES AND PERIODICALLY THEREAFTER.

ICON VEHICLE DYNAMICS LIMITED LIFETIME WARRANTY

ICON Vehicle Dynamics warrants to the original retail purchaser who owns the vehicle on which the product was originally installed. ICON Vehicle Dynamics does not warrant the product for finish, alterations, modifications and/or installation contrary to ICON Vehicle Dynamics instructions. ICON Vehicle Dynamics products are not designed, nor are they intended to be installed on vehicles used in race applications, for racing purposes or for similar activities. (A "race" is defined as any contest between two or more vehicles, or a contest of one or more vehicles against the clock, whether or not such contest is for a prize). This warranty does not include coverage for police or taxi vehicles, race vehicles, or vehicles used for government or commercial purposes. Also excluded from this warranty are sales outside of the United States of America and Canada.

ICON Vehicle Dynamics' obligation under this warranty is limited to the repair or replacement, at ICON Vehicle Dynamics' discretion, of the defective product. Any and all costs of removal, installation or re-installation, freight charges and incidental or consequential damages are expressly excluded from this warranty. Items that are subject to wear are not considered defective when worn and are not covered.

ICON Vehicle Dynamics components must be installed as a complete kit as shown in our current application guide. Any substitutions or exemptions of required components will immediately void the warranty. Some finish damage may happen to parts during shipping and is not covered under warranty.

This warranty is expressly in lieu of all other warranties expressed or implied. This warranty shall not apply to any product that has been improperly installed, modified or customized subject to accident, negligence, abuse or misuse.



ICON VEHICLE DYNAMICS®
PERFORMANCE SUSPENSION SYSTEMS AND SHOCK ABSORBERS

7929 Lincoln Ave. Riverside, CA 92504 Phone: 951.689.ICON Fax: 951.689.1016
www.iconvehicledynamics.com



FOLLOW US ON FACEBOOK!

