

PART #	DESCRIPTION
77750CP	15-UP COLORADO/CANYON 0-2" REAR 2.5 VS PB CDCV SHOCKS

COMPONENTS INCLUDED	
(1) 174954C 15+ COLORADO/CANYON 0-2" REAR 2.5 VS PB CDCV (DRVR)	(1) 174954C 15+ COLORADO/CANYON 0-2" REAR 2.5 VS PB CDCV (PASS)
HARDWARE INCLUDED	
N/A	
TOOLS REQUIRED	
JACK JACK STANDS SANDER	13MM SOCKET / WRENCH (DIESEL ONLY) 21MM SOCKET / WRENCH TORQUE WRENCH
TECH NOTES	
<p>1. IT IS EASIEST TO INSTALL THESE SHOCKS WHEN THE AXLE IS AT FULL DROOP. COMPRESSING THE SHOCKS BY HAND IS DIFFICULT.</p> <p>2. 2. YOUR ICON SHOCK ASSEMBLIES COME FACTORY CHARGED TO 150 PSI. RELEASING NITROGEN PRESSURE MAY LEAD TO SHOCK MALFUNCTION AND REDUCED RIDE QUALITY. FAILURE CAUSED BY LOW NITROGEN PRESSURE IS NOT COVERED UNDER ICON'S WARRANTY POLICY.</p> <p>3. THE NITROGEN CHARGE WILL LIFT THE REAR OF THE VEHICLE APPROXIMATELY 0.5"</p>	



WARNING!

**** READ ALL INSTRUCTIONS THOROUGHLY FROM START TO FINISH BEFORE BEGINNING INSTALLATION! IF THESE INSTRUCTIONS ARE NOT PROPERLY FOLLOWED SEVERE FRAME, SUSPENSION AND TIRE DAMAGE MAY RESULT TO THE VEHICLE!**

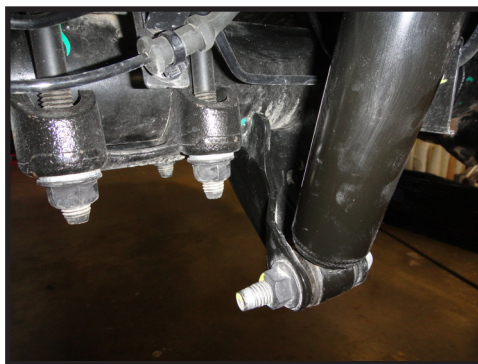
**** ICON VEHICLE DYNAMICS RECOMMENDS THAT YOU EXERCISE EXTREME CAUTION WHEN WORKING UNDER A VEHICLE THAT IS SUPPORTED WITH JACK STANDS.**

INSTALLATION

1. Using a properly rated jack, raise the rear of the vehicle and support the frame rails with jack stands. Ensure the jack stands are secure and set properly before lowering the jack. NEVER WORK UNDER AN UNSUPPORTED VEHICLE.

2. Remove the OEM rear shocks using a 21mm socket/wrench. (FIGURE 1)

FIG.1



3. DIESEL ONLY: The diesel exhaust fluid tank must be dropped slightly in order to remove the upper shock bolt. Remove the (3) bolts connecting the DEF tank to the crossbar in front of the tank. Remove the 2 nuts from the driver side metal strap using a 13mm socket/wrench and remove the strap. Gently pull down on the tank while removing the bolt. The tank should be able to move enough to get the bolt out. (FIGURE 2 & 3)

FIG.2

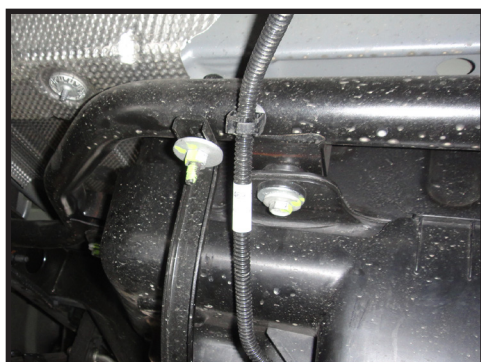


FIG.3



4. The driver side upper inside tab needs to be sanded to clear the top cap as pictured. Failure to sand will not allow shock to be installed at full extension and could lead to damage not covered by warranty. (FIGURE 4 AND 5)

FIG.4



FIG.5



5. The passenger side tabs (both) need to be sanded as pictured. Failure to sand will not allow shock to be installed at full extension and could lead to damage not covered by warranty. (FIGURE 6 AND 7)

FIG.6

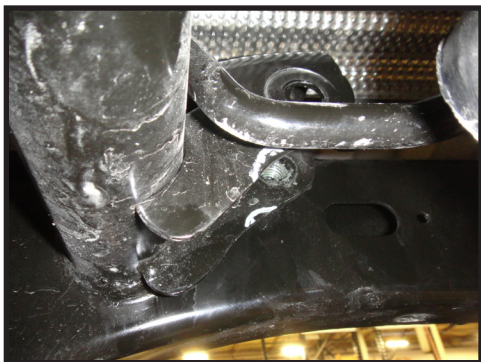


FIG.7



6. Install the upper bolt first with the wide spacer to the outside, spacing the shock away from the frame for added clearance. Use a 21mm socket/wrench. [Torque to factory spec] (FIGURE 8 AND 9)

FIG.8



FIG.9



7. DIESEL ONLY: Reconnect all bolts and strap for DEF tank using a 13mm socket/wrench. [Torque to factory spec]

8. Install the lower bolt using a 21mm socket/wrench. Use the offset spacers provided to space the shock away from the frame. It helps to have the axle fully drooped for this step. [Torque to factory spec] (FIGURE 10)

FIG.10



VERIFY ALL FASTENERS ARE PROPERLY TORQUED BEFORE DRIVING VEHICLE.

RETORQUE ALL NUTS, BOLTS AND LUGS AFTER 100 MILES AND PERIODICALLY THEREAFTER.

2.5 VS SERIES SHOCK & COILOVER TECHNICAL INFORMATION

MAINTENANCE

ICON shock absorbers are a high quality rebuildable race style shock absorber designed for optimal performance. With a unit of this caliber on your vehicle, routine maintenance is required to keep them looking and operating in like new condition. Residual oil and assembly lube may be present at all seal paths from the factory out of the box and is considered normal. Pooling of oil however is not acceptable at any time and one should contact the ICON dealer where purchased.

BELOW ARE GUIDELINES BASED ON HOW YOU USE YOUR VEHICLE BUT YOUR MILEAGE MAY VARY:

STREET USE:

- Send in for factory servicing every 40,000 miles or if a leak develops, ride quality decreases, or they begin to make excessive noise.
- Remove any buildup of road salt, mud, or debris from shocks and coil springs anytime accrued
- Clean with mild soap and water with each oil change or anytime you notice build up.
- Wax the cylinders yearly with automotive wax to prevent corrosion.
- Check nitrogen pressure yearly. (252004 charge needle assembly available at any ICON distributor)
- Check bearings for excessive wear yearly.
- DO NOT apply any type of lube to the upper and lower bearings.

STREET/DIRT:

- Send in for factory servicing every 15,000 miles or if a leak develops, ride quality decreases, or they begin to make excessive noise.
- Clean with mild soap and water with each oil change, offroad trip, or anytime you notice build up.
- Wax the cylinders yearly with automotive wax to prevent corrosion.
- Check nitrogen pressure each dirt outing. (252004 charge needle assembly available at any ICON distributor)
- Check bearings for excessive wear yearly.
- DO NOT apply any type of lube to the upper and lower bearings.

DIRT USE:

- Send in for factory servicing every 1,000 miles.
- Check nitrogen pressure each outing. (252004 charge needle assembly available at any ICON distributor)
- Remove any buildup of mud or debris from shocks and coil springs after every outing.

SELF-SERVICE:

- Contact ICON for service kits & tools at (951) 689-4266.

PRODUCT REGISTRATION

Please visit: <http://www.iconvehicledynamics.com/tech-support/registration/> to register your product.

ICON VEHICLE DYNAMICS SHOCK ABSORBER WARRANTY

This shock absorber has a 1 year warranty against any manufacturer's defects. If a shock fails within the initial year of ownership, the shock must be shipped to ICON Vehicle Dynamics for inspection and service. If a shock is inspected and it has been determined the shock failed due to neglect, damage caused by improper installation or any other reason besides "normal wear and tear", the owner of said shock is responsible for all service costs. This includes labor, parts, and shipping.

ICON Vehicle Dynamics warrants to the original retail purchaser who owns the vehicle on which the product was originally installed. ICON Vehicle Dynamics does not warrant the product for finish, alterations, modifications and/or installation contrary to ICON Vehicle Dynamics instructions. ICON Vehicle Dynamics products are not designed, nor are they intended to be installed on vehicles used in race applications, for racing purposes or for similar activities. (A "race" is defined as any contest between two or more vehicles, or a contest of one or more vehicles against the clock, whether or not such contest is for a prize). This warranty does not include coverage for police or taxi vehicles, race vehicles, or vehicles used for government or commercial purposes. Also excluded from this warranty are sales outside of the United States of America and Canada.

ICON Vehicle Dynamics' obligation under this warranty is limited to the repair or replacement, at ICON Vehicle Dynamics' discretion, of the defective product. Any and all costs of removal, installation or re-installation, freight charges and incidental or consequential damages are expressly excluded from this warranty. Items that are subject to wear are not considered defective when worn and are not covered.

ICON Vehicle Dynamics components must be installed as a complete kit as shown in our current application guide. Any substitutions or exemptions of required components will immediately void the warranty. Some finish damage may happen to parts during shipping and is not covered under warranty.

This warranty is expressly in lieu of all other warranties expressed or implied. This warranty shall not apply to any product that has been improperly installed, modified or customized subject to accident, negligence, abuse or misuse.

To send a shock in for warranty please visit our website <http://www.iconvehicledynamics.com/tech-support/shock-service/>

ICON VEHICLE DYNAMICS

PERFORMANCE SUSPENSION SYSTEMS AND SHOCK ABSORBERS

7929 Lincoln Ave. Riverside, CA 92504 Phone: 951.689.ICON Fax: 951.689.1016
www.iconvehicledynamics.com



FOLLOW US ON FACEBOOK!

