

PART #	DESCRIPTION
95020	21-UP FORD F150 RAPTOR LIVE VALVE MOUNT KIT, GEN 3

COMPONENTS INCLUDED	
(2) 190514 21+ F150 RAPTOR E-VALVE COIL BRACKET FRONT (2) 190515 21+ F150 RAPTOR E-VALVE COIL BRACKET REAR	(4) 197029 F150 RAPTOR LIVE VALVE CORE
HARDWARE INCLUDED	
(4) 605101 3/8-16 X 1.000 HHCS GR8 YZINC (4) 605125 3/8-16 GR5 U NUT BLK PHOS (8) 605134 3/8-16 X .750 BHCS 18-8 RAW	(4) 605166 3/8 FENDER WASHER, 1.500 X .406 X .047 CZINC (2) 605968 VIBRATITE BLUE 2ML BULLET (8) 605998 FOAM WASHER, 1.500 X .750 X .062
TOOLS REQUIRED	
5/16" ALLEN	9/16" SOCKET / WRENCH
TECH NOTES	
<p>1. VEHICLE MODELS/TRIMS: 21-UP RAPTOR.</p> <p>2. CONFLICTING PARTS: DOES NOT APPLY TO DUAL LIVE VALVE TRUCKS (24+ "R" AND "37" PACKAGES).</p> <p>3. INSTALLATION TIME: APPROX. 1 HOUR.</p>	



### WARNING!

**\*\* READ ALL INSTRUCTIONS THOROUGHLY FROM START TO FINISH BEFORE BEGINNING INSTALLATION! IF THESE INSTRUCTIONS ARE NOT PROPERLY FOLLOWED SEVERE FRAME, SUSPENSION AND TIRE DAMAGE MAY RESULT TO THE VEHICLE!**

**\*\* ICON VEHICLE DYNAMICS RECOMMENDS THAT YOU EXERCISE EXTREME CAUTION WHEN WORKING UNDER A VEHICLE THAT IS SUPPORTED WITH JACK STANDS.**

**\*\* ICON VEHICLE DYNAMICS RECOMMENDS ALL INSTALLATION TO BE PERFORMED BY A PROFESSIONAL SHOP/SERVICE TECHNICIAN. PRODUCT FAILURE CAUSED BY IMPROPER INSTALLATION WILL NOT BE COVERED UNDER ICON'S WARRANTY POLICY.**

## INSTALLATION

**1.** Remove the solenoid coil off the valve core of the OE shock by unscrewing the black plastic cap nut that retains it. Slide the coil off the valve core. [FIGURE 1 & 2]



FIG.1

**2.** Reroute the coil and the wire to the mounting locations shown below. In front of the coil bucket for the front and above the forward most bed mount for the rear.



FIG.2

**3.** Install the coil on the core and bracket as shown with a foam ring on either side of the coil and the large washer then the button head bolt. Use blue locktite on the button head bolt. Tighten to 15 ft-lbs (flat bracket in front, L-bracket in rear). [FIGURE 3 & 4]

FIG.3



FIG.4



**4.** In the front insert the supplied U-nut clip in though the square hole and aligned with the existing round hole in the frame above the front cross member and near the top of the frame. Bolt the coil/core/bracket assembly to the frame with the supplied 3/8 bolt with the coil sitting just above the frame as shown. [FIGURE 5, 6 & 7]

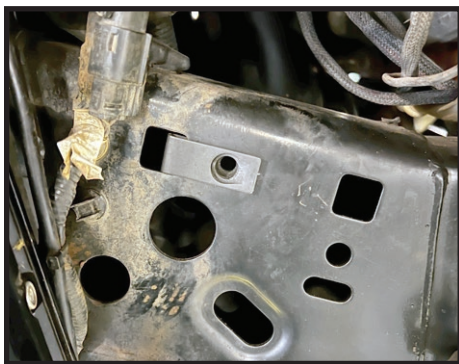


FIG.5



FIG.6



FIG.7

**5.** In the rear the U-nut is installed on the L-bracket. Position the coil/core/ bracket above the bed mount tower on the frame as shown. With the supplied bolt and large washer, secure the bracket to the frame. [FIGURE 8 & 9]

FIG.8



FIG.9



**6.** Secure the excess wire safely out of the way with zip-ties.

**VERIFY ALL FASTENERS ARE PROPERLY TORQUED BEFORE DRIVING VEHICLE.**

**RETORQUE ALL NUTS, BOLTS AND LUGS AFTER 100 MILES AND PERIODICALLY THEREAFTER.**

## ICON VEHICLE DYNAMICS LIMITED LIFETIME WARRANTY

ICON Vehicle Dynamics warrants to the original retail purchaser who owns the vehicle on which the product was originally installed. ICON Vehicle Dynamics does not warrant the product for finish, alterations, modifications and/or installation contrary to ICON Vehicle Dynamics instructions. ICON Vehicle Dynamics products are not designed, nor are they intended to be installed on vehicles used in race applications, for racing purposes or for similar activities. (A "race" is defined as any contest between two or more vehicles, or a contest of one or more vehicles against the clock, whether or not such contest is for a prize). This warranty does not include coverage for police or taxi vehicles, race vehicles, or vehicles used for government or commercial purposes. Also excluded from this warranty are sales outside of the United States of America and Canada.

ICON Vehicle Dynamics' obligation under this warranty is limited to the repair or replacement, at ICON Vehicle Dynamics' discretion, of the defective product. Any and all costs of removal, installation or re-installation, freight charges and incidental or consequential damages are expressly excluded from this warranty. Items that are subject to wear are not considered defective when worn and are not covered.

ICON Vehicle Dynamics components must be installed as a complete kit as shown in our current application guide. Any substitutions or exemptions of required components will immediately void the warranty. Some finish damage may happen to parts during shipping and is not covered under warranty.

This warranty is expressly in lieu of all other warranties expressed or implied. This warranty shall not apply to any product that has been improperly installed, modified or customized subject to accident, negligence, abuse or misuse.



**ICON VEHICLE DYNAMICS®**  
PERFORMANCE SUSPENSION SYSTEMS AND SHOCK ABSORBERS

7929 Lincoln Ave. Riverside, CA 92504 Phone: 951.689.ICON Fax: 951.689.1016  
[www.iconvehicledynamics.com](http://www.iconvehicledynamics.com)



**FOLLOW US ON FACEBOOK!**

