

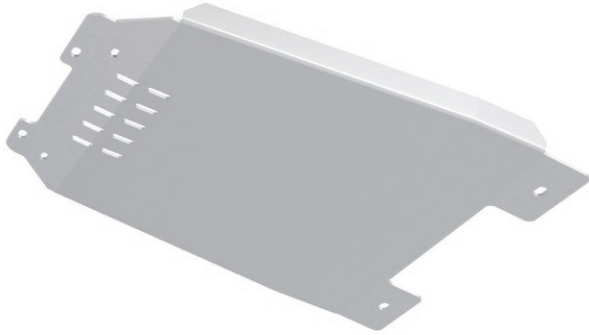


INSTALLATION INSTRUCTIONS

24-25 TOYOTA TACOMA, 4RUNNER, GAS/ AUTOMATIC, TRANSMISSION SKID PLATE KIT

DOCUMENT: INST_56117_REV B

Thank you for purchasing this ICON Vehicle Dynamics product. Please read through this entire document before proceeding with installation. If you are not confident in your mechanical skills, please seek the help of a professional to perform the installation. Check your packages immediately upon arrival to ensure that everything listed is included, and to check for damage during shipping. If anything is missing or damaged, or if you need technical assistance with any aspect of this installation, call (951) 689-ICON as soon as possible.



APPLICATION

These installation instructions apply to the following products:

56117 24 Toyota Tacoma Transmission Aluminum Skid Plate

COMPONENTS INCLUDED

- (1) 154251 Rear Skid Plate
- (1) 56117H 24 Tacoma Rear Skid Plate Hardware Kit

HARDWARE INCLUDED

- (2) 154253 Tacoma Nut Plate
- (4) 606004 18-8 Stainless Steel M8-1.25 X 35MM Flat Head Screw
- (4) 606005 M8 Countersunk Washer
- (2) 606007 18-8 Stainless Steel 1/2-13 X 1.5" 82 Degree Flat Head Screw
- (2) 606008 1/2 Countersunk Washer

TECH NOTES

Does not work with Manual Transmission.
Installation time: 20-30 mins.

TOOLS REQUIRED

- Jack/Jack Stand
- Torque Wrench
- 5mm Hex Bit
- 5/16" Hex Key Bit
- 12mm Socket/Wrench

IMPORTANT NOTICES - PLEASE READ FIRST

- ✓ **READ ALL INSTRUCTIONS THOROUGHLY FROM START TO FINISH BEFORE BEGINNING INSTALLATION! IF THESE INSTRUCTIONS ARE NOT PROPERLY FOLLOWED SEVERE FRAME, SUSPENSION AND TIRE DAMAGE MAY RESULT TO THE VEHICLE!**
- ✓ **ICON VEHICLE DYNAMICS RECOMMENDS ALL INSTALLATION TO BE PERFORMED BY A PROFESSIONAL SHOP/SERVICE TECHNICIAN. PRODUCT FAILURE CAUSED BY IMPROPER INSTALLATION WILL NOT BE COVERED UNDER ICON'S WARRANTY POLICY.**

INSTALLATION INSTRUCTIONS

1. Place the truck on a flat surface with the parking brake engaged, chock the REAR/FRONT tires.
2. Use a suitable floor jack in the manufacturer designated spot on the frame to lift the front of the truck, then place a suitable jack stand under the frame and set the truck down securely on the jack stand. NEVER WORK UNDER AN UNSUPPORTED VEHICLE.
3. Remove the four factory skid plate bolts using a 12mm wrench or socket. [FIG. 1]

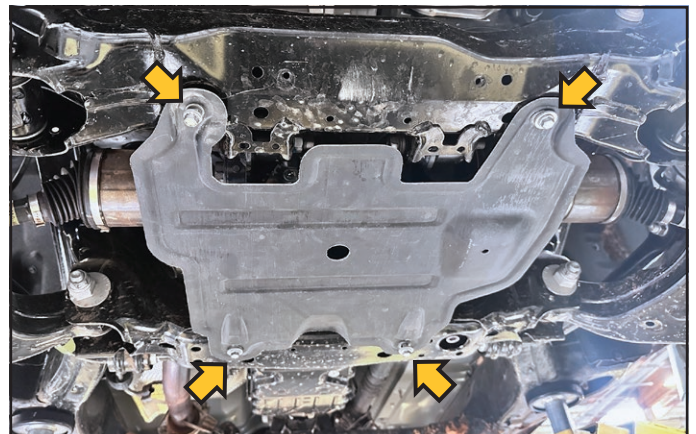


FIG. 1



4. Install the nut tabs (PN: 154253) into the transmission crossmember. Line the nut tab up with the hole in the crossmember. Install the other nut tab in to the crossmember lining it up with the hole on the other side. [FIG. 2 & 3]



FIG. 2



FIG. 3

5. Hold the REAR SKID PLATE in position with the help of a jack stand. Install the 1/2"-13 X 1.5" flat head screw and 1/2" countersunk washer with a 5/16" hex bit as shown. DO NOT fully tighten screws down until the skid plate is aligned with the center of the vehicle. [FIG. 4]



FIG. 4

6. If installing ICON Front Skid Plate (56116), please do so before moving forward. Using a 5MM hex bit install the two (2) M8 flat head screws and M8 countersunk washer into the middle crossmember where the factory bolts are shown. Once all four (4) screws are started, align the skid plate with the center of the vehicle and tighten each screw. Tighten the M8 screws [Torque to 19.8ft-lbs] and 1/2-13 screws [Torque to 80 ft-lbs]. [FIG. 5, 6, 7]

NOTE: M8-1.25 X 35MM screws will be installed to the threaded holes in the frame, no nut tab needed for these screws.



FIG. 5



FIG. 6



FIG. 7

RETORQUE ALL NUTS, BOLTS AND LUGS AFTER 100 MILES AND PERIODICALLY THEREAFTER.

**ICON VEHICLE DYNAMICS LIMITED LIFETIME WARRANTY**

ICON Vehicle Dynamics warrants to the original retail purchaser who owns the vehicle on which the product was originally installed. ICON Vehicle Dynamics does not warrant the product for finish, alterations, modifications and/or installation contrary to ICON Vehicle Dynamics instructions. ICON Vehicle Dynamics products are not designed, nor are they intended to be installed on vehicles used in race applications, for racing purposes or for similar activities. (A "race" is defined as any contest between two or more vehicles, or a contest of one or more vehicles against the clock, whether or not such contest is for a prize). This warranty does not include coverage for police or taxi vehicles, race vehicles, or vehicles used for government or commercial purposes. Also excluded from this warranty are sales outside of the United States of America and Canada.

ICON Vehicle Dynamics' obligation under this warranty is limited to the repair or replacement, at ICON Vehicle Dynamics' discretion, of the defective product. Any and all costs of removal, installation or re-installation, freight charges and incidental or consequential damages are expressly excluded from this warranty. Items that are subject to wear are not considered defective when worn and are not covered.

ICON Vehicle Dynamics components must be installed as a complete kit as shown in our current application guide. Any substitutions or exemptions of required components will immediately void the warranty. Some finish damage may happen to parts during shipping and is not covered under warranty.

This warranty is expressly in lieu of all other warranties expressed or implied. This warranty shall not apply to any product that has been improperly installed, modified or customized subject to accident, negligence, abuse or misuse.

**ICON VEHICLE DYNAMICS®**

PERFORMANCE SUSPENSION SYSTEMS AND SHOCK ABSORBERS

7929 Lincoln Ave. Riverside, CA 92504 Phone: 951.689.ICON Fax: 951.689.1016
www.iconvehicledynamics.com

**FOLLOW US ON FACEBOOK!**