

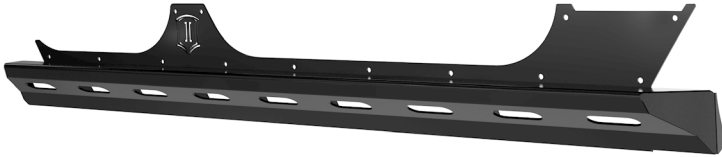


## INSTALLATION INSTRUCTIONS

# JK PRO SERIES ROCKER GUARDS FOR JK UNLIMITED (4-DOOR)

DOCUMENT: INST-25225-REV-A • UPDATED: JUL 2020

Thank you for purchasing this ICON Vehicle Dynamics product. Please read through this entire document before proceeding with installation. If you are not confident in your mechanical skills, please seek the help of a professional to perform the installation. Check your packages immediately upon arrival to ensure that everything listed is included, and to check for damage during shipping. If anything is missing or damaged, or if you need technical assistance with any aspect of this installation, call (951) 689-ICON as soon as possible.



### APPLICATION

These installation instructions apply to the following products:

**25225 07-18 JK 4DR PS ROCKER GUARD KIT**  
(Shown Above)

### COMPONENTS INCLUDED

- (1) JK 4-Door PRO Series Exo Skin - Left
- (1) JK 4-Door PRO Series Exo Skin - Right
- (1) JK 4-Door PRO Series Rock Rail - Left
- (1) JK 4-Door PRO Series Rock Rail - Right

### HARDWARE INCLUDED

- (42) 5/16-18 X 1 SS Flat Head Socket Cap Screw
- (42) 5/16-18 Threaded Rivet Nut (Nut-Sert)
- (22) 3/8-16 X 1 SS Flat Head Socket Cap Screw
- (22) 3/8-16 Clip Nut
- (1) Rivet Nut Installation Tool

### TECH NOTES

**NOTE:** These installation instructions are based on a clean installation on to a stock 2007-2018 Jeep JK Wrangler. Previously modified vehicles may require additional steps.

### TOOLS REQUIRED

- Ratchet with extension, 13mm & 18mm sockets
- 3/16" & 7/32" hex key (Allen wrench) or hex driver socket
- 10mm, 1/2" & 5/8" combination wrench
- Torque wrench
- Rivet Nut (Nut-Sert) Installation Tool (included)
- Drill motor with 3/8" & 17/32" drill bits
- Masking tape and touch-up paint

### IMPORTANT NOTICES - PLEASE READ FIRST

- ✓ **READ ALL INSTRUCTIONS THOROUGHLY FROM START TO FINISH BEFORE BEGINNING INSTALLATION! IF THESE INSTRUCTIONS ARE NOT PROPERLY FOLLOWED SEVERE FRAME, SUSPENSION AND TIRE DAMAGE MAY RESULT TO THE VEHICLE!**
- ✓ **ICON VEHICLE DYNAMICS RECOMMENDS ALL INSTALLATION TO BE PERFORMED BY A PROFESSIONAL SHOP/SERVICE TECHNICIAN. PRODUCT FAILURE CAUSED BY IMPROPER INSTALLATION WILL NOT BE COVERED UNDER ICON'S WARRANTY POLICY.**

### INSTALLATION INSTRUCTIONS

1. Ensure the vehicle is placed on a flat, level surface with the transmission in PARK, the tires chocked, and the emergency brake ON. Wear safety glasses from this point forward.
2. Remove the factory rocker rails, if present (*some Jeeps do not have factory rock rails. If yours doesn't, skip this step*). On the underside of the Jeep, use a 10mm socket to remove the six (6) smaller nuts that attach the rocker rail along the pinch seam. Use a 13mm socket to remove the three (3) larger bolts that hold the rocker rail's Z-brackets to the underside of the body tub. The rocker rail will hang in place by the pinch seam bolts, even with the nuts removed. Once all nine nuts and bolts are removed, remove the rocker rail by pulling it away from the Jeep.



FIG. 1



3. Apply masking tape onto the front and rear fender flares, and on the Jeep's body tub sheet metal where the Exo Skins will attach. While this step isn't absolutely necessary, it is recommended in order to protect the Jeep's paint from scratches during the installation process.



FIG. 2

4. With the help of a friend, hold the rock rail Exo Skin up to the body of the Jeep as shown in the photo below. The Exo Skin will fit into place vertically by interfacing with the curve of the body. For horizontal alignment, visually ensure that the edges of the Exo Skin are aligned with the door cutouts of the Jeep, with a uniform alignment from end to end. There should be a 3/8" gap around the bottom edge of the door and the Exo Skin.

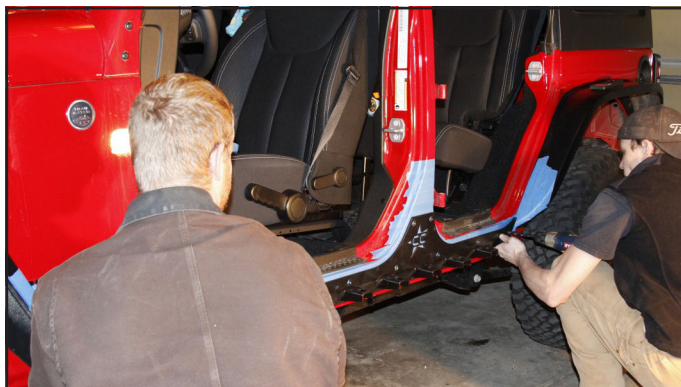


FIG. 3

5. While holding the Exo Skin in place, use the drill motor with 3/8" bit to drill ONLY ONE 3/8" hole in the rearward most hole. Set the Exo Skin aside.
6. Switch to a 17/32" bit and enlarge the hole started in the previous step to 17/32". Apply touch-up paint to the newly exposed metal around the edge of the hole to prevent it from rusting.
7. Install a 5/16-18 Threaded Rivet Nut (Nut-Sert) into the newly drilled hole. If a dedicated rivet-nut installation tool is not available, use the

## SUPPLEMENT: USING THE RIVET-NUT TOOL

*It is recommended to use a dedicated rivet-nut installation tool if one is available, however the process can be performed using the simple "tool" included in the hardware kit. The included tool consists of a bolt, two washers and a coupler (long) nut:*



**A.** Begin by slipping a washer on to the bolt, followed by the coupler nut, followed by the second washer. Thread the rivet-nut you wish to install on to the end of the bolt and snug it up to the washer, then back it off a quarter turn so that the washers and coupler nut can spin freely on the bolt.

**B.** Insert the knurled end of the rivet-nut into the hole, pressing its flange firmly against the Jeep's sheet metal. Use an end wrench to hold the coupler nut stationary while turning the head of the bolt clockwise with a ratchet and socket. As the ratchet is turned, the bolt will draw the far end of the rivet-nut toward the inside of the sheet metal, gripping it with the knurled outside edge of the nutsert as it deforms.

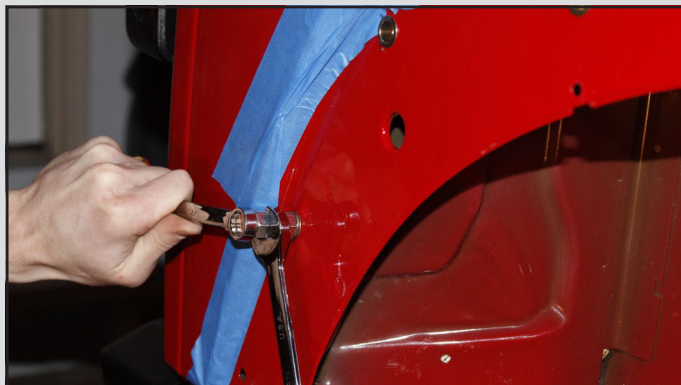


IMAGE MAY NOT MATCH THIS PART INSTALLATION. IT IS FOR ILLUSTRATION OF THE USE OF THE TOOL ONLY.

**C.** Continue to turn the ratchet until the rivet-nut is fully seated. DO NOT OVER-TIGHTEN as you can damage the nutsert, or cause it to lose its grip.

**D.** Once the nutsert has seated correctly, loosen the bolt then remove it and the rest of the tool from the nutsert.

**E.** Install a new rivet-nut onto the tool, oriented the same as the last, and set it aside until your next nutsert installation.





simple tool that is included in the hardware kit, following the instructions in the section titled "SUPPLEMENT: USING THE RIVET-NUT TOOL."

8. With the help of a friend, hold the rock rail Exo Skin up to the body of the Jeep again. Install a 5/16-18 X 1 SS Flat Head Socket Cap Screw into the rear-most hole in the Exo Skin and thread it into the rivet nut installed in the previous steps.
9. While continuing to hold the Exo Skin in place use the drill motor with 3/8" bit to drill ONLY ONE 3/8" hole in the forward-most hole. Remove the Exo Skin once again and set it aside.

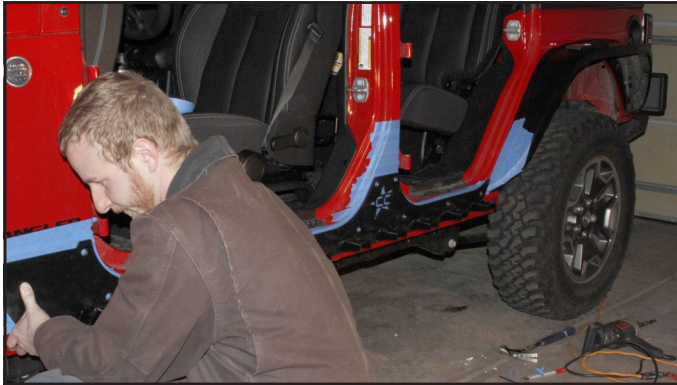


FIG. 4

10. Switch to a 17/32" bit and enlarge the hole started in the previous step to 17/32". Apply touch-up paint to the newly exposed metal around the edge of the hole to prevent it from rusting.
11. Re-install the Exo Skin using two 5/16-18 X 1 SS Flat Head Socket Cap Screws into the two rivet nuts installed so far.
12. Use the drill motor with 3/8" bit to drill the remaining 19 hole locations. Remove the Exo Skin once again and set it aside.
13. Switch to a 17/32" bit and enlarge the holes started in the previous step to 17/32". Apply touch-up paint to the newly exposed metal around the edge of each hole to prevent it from rusting.
14. Install a 5/16-18 Threaded Rivet Nut (Nut-Sert) into each of the newly-drilled 17-32" holes.
15. Remove the protective masking tape that was applied at the beginning of the installation process.



FIG. 5

16. With the help of a friend, carefully hold the rock rail Exo Skin up to the body of the Jeep again and attach it with twenty-one (21) of the included 5/16-18 X 1 SS Flat Head Socket Cap Screws. Do not tighten any of the fasteners until they have all been started. Once all fasteners have been started, finish tightening each of them.



FIG. 6

17. Install a 3/8-16 Clip Nut onto each of the eleven (11) tabs protruding from the side of the Exo Skin. Install them as shown in the photo below, with the flush side oriented upward and the threaded barrel of the nut clip seated into the hole in the tab.

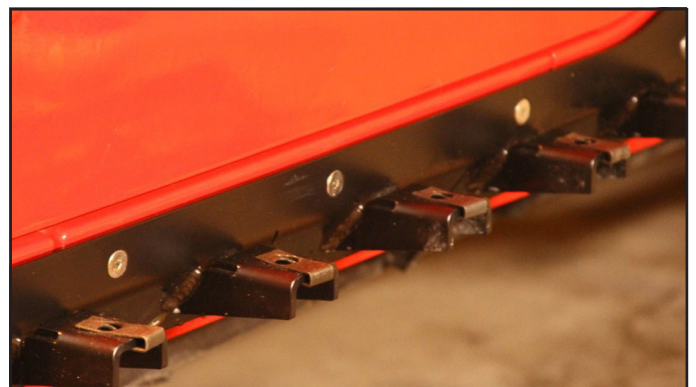


FIG. 7



18. Use an 18mm socket and ratchet to remove the main body mount bolt from each of the three body mounts on the underside of the Jeep, shown below.



FIG. 8

19. With the help of a friend, place the Rock Rail on to the Exo Skin tabs while aligning the body mount tabs on the underside of the Rock Rail with the body mount bushings. While holding it in place install the eleven 3/8-16 X 1 SS Flat Head Socket Cap Screws into the holes along the top. Re-install the three body mount bolts to clamp the underside of the Rock Rail into place.
20. Once all of the fasteners are installed, torque the 3/8-16 X 1 SS Flat Head Socket Cap Screws to 240 in-lbs. Torque the body mount bolts to 45 ft.-lbs.



FIG. 9

21. Repeat the installation process for the other side of the vehicle.
22. VERIFY ALL FASTENERS ARE PROPERLY TORQUED BEFORE DRIVING VEHICLE.

*Congratulations! Your installation is complete.*

*RE-TORQUE ALL NUTS, BOLTS AND LUGS AFTER 100 MILES AND PERIODICALLY THEREAFTER.*

**LIMITED LIFETIME WARRANTY**

*ICON Vehicle Dynamics warrants to the original retail purchaser who owns the vehicle on which the product was originally installed. ICON Vehicle Dynamics does not warrant the product for finish, alterations, modifications and/or installation contrary to ICON Vehicle Dynamics instructions. ICON Vehicle Dynamics products are not designed, nor are they intended to be installed on vehicles used in race applications, for racing purposes or for similar activities. (A "race" is defined as any contest between two or more vehicles, or a contest of one or more vehicles against the clock, whether or not such contest is for a prize). This warranty does not include coverage for police or taxi vehicles, race vehicles, or vehicles used for government or commercial purposes. Also excluded from this warranty are sales outside of the United States of America and Canada.*

*ICON Vehicle Dynamics' obligation under this warranty is limited to the repair or replacement, at ICON Vehicle Dynamics' discretion, of the defective product. Any and all costs of removal, installation or re-installation, freight charges and incidental or consequential damages are expressly excluded from this warranty. Items that are subject to wear are not considered defective when worn and are not covered.*

*ICON Vehicle Dynamics components must be installed as a complete kit as shown in our current application guide. Any substitutions or exemptions of required components will immediately void the warranty. Some finish damage may happen to parts during shipping and is not covered under warranty.*

*This warranty is expressly in lieu of all other warranties expressed or implied. This warranty shall not apply to any product that has been improperly installed, modified or customized subject to accident, negligence, abuse or misuse.*

**ICON VEHICLE DYNAMICS®**  
PERFORMANCE SUSPENSION SYSTEMS AND SHOCK ABSORBERS

7929 Lincoln Ave. Riverside, CA 92504  
Phone: 951.689.ICON Fax: 951.689.1016  
[www.iconvehicledynamics.com](http://www.iconvehicledynamics.com)

**FOLLOW US ON FACEBOOK!**